

Society for Range Management



Utah Section Newsletter

Spring 2009

SRM Utah Section Newsletter

Maxine Deeter Editor

| | |
|-------------------|---------------------------|
| Randy Russell | President |
| Chad Reid | President Elect |
| Tom Monaco | Past President |
| Ron Torgerson | Treasurer |
| Ross Wight | Secretary |
| Karl Ivory | Director |
| Maxine Deeter | Director |
| Mike Gates | Director |
| Joe Jensen | So. Chapter President |
| Chad Horman | So. Chapter Pres-Elect |
| Larry Lichthardt | No. Chapter President |
| Linden Greenhalgh | No. Chapter Pres-Elect |
| Jeff Walton | BYU Chapter President |
| Derek Trauntvein | USU Chapter Pres. |
| Mike Ralphs | Historian |
| Dana Truman | Information & Education |
| John Malechek | Membership |
| Jeff Barnes | Scholarship |
| Art Tait | Finance |
| Seth Ohms | Student Affairs |
| Bob Campbell | Range Excellence |
| Steve Monson | Awards |
| George Cook | Ut Ntl Rcrrs Field School |
| Jim Brown | Fund Raising Chair |
| Sherel Goodrich | Range Reference & Natural |
| Chad Reid | Areas Co-chairs |



Notes from the President

Randy Russell



Howdy Professionals, Ranchers, Range Managers and Students:

As we embrace 2009, I wish you all well. Many thanks to those of you who were able to attend our Fall meeting held in Provo at the Bean Life Museum on BYU Campus. The active participation of members made it a success. A special thanks to Steven Peterson and Tom Monaco who arranged the facility and food. I hope many of you were able to participate in the 62nd International Annual Meeting in Albuquerque, New Mexico. By the time you receive this, the 62nd Annual Meeting will be history. I would like to encourage Utah Section members to not only be active in the Utah Section, but also at the National Level as officers, committee members, or some other volunteer capacity. We do have a great wealth of range knowledge and abilities in our Utah Section membership that we could share with the parent Society. Along those same lines, I have made the commitment to personally find 1-2 students to attend the Rangeland Camp held at Gooseberry Forest Service Educational Camp in July. George Cook does an excellent job in leading this effort to educate our future range managers. Two students selected from this camp will represent the Utah Section at the International meeting to be held in Denver, Colorado in 2010. Our involvement will open many doors and provide opportunities for our students. George always welcomes volunteers to help chaperon, share knowledge, grade papers and help with the cooking.

Today as I write this, winter is upon us and I would like to give you a gentle reminder concerning our 2009 Awards program. Typically, winter is usually a slow time for us to ponder such things as our good people and nominations. But life styles have become busy and fast. So when you have time, please be thinking about nominations for Range Manager and Rancher of the Year, Outstanding Young Range Professional and the Range Excellence Award. The nominations can be made anytime, including now, before our fall meeting. If you have a group or individual you would like to nominate, let us know and we can provide help to write the nomination up on paper. Often times I find the writing is perhaps the part we have the most trouble with. I am certain the nominations committee would welcome a flood of nominations from a variety of backgrounds, education, and passions who have made a difference in Range Management in Utah.

Our finances for the Utah Section are recurring a very reasonable rate of return, even through these tough economic times. Our accountant currently has the books, as this is being written, to file end of year reports. Fund raisers and new ideas are always welcome and greatly appreciated.

As a closing comment, I would like to extend a sincere thank you to all of the Section members who have retired at one time or another, but continue to share their knowledge, wisdom and efforts with us younger Section members. As Section President, I hope that your contributions continue on for many more years.

Our next committee Chair and Council meeting will be on April 1, 2009 in Provo. If you have suggestions or comments, please feel free to email me rrussell@fs.fed.us. My office phone number is 435-652-3131. I look forward to responding to your comments and wish you all the best of luck in this coming year.

Awards Presented at the Utah Section Annual Meeting – 2008

Various awards were presented at the Utah Section annual meeting held on Nov. 8, 2008, in Provo, Utah. Awards were presented by the section to the following: Mr. Mark Madsen as the Outstanding Young Range Professional; Dr. Bruce Roundy as the Range Manager of the Year; and Mr. Ray Terry Larsen as the Rancher of the Year. Dr. Stewart Sanderson was presented with a Presidents Special Accomplishment award. Recipients of the Range Excellence Award was Lane and Danny Little of Little Livestock, Kanab, Utah. The nominees were enthusiastically supported by a number of their peers.

Outstanding Young Range Professional

Mark Madsen is currently the Forest Botanist of the Dixie National Forest, but also serves as the Botanist for portions of the Fishlake National Forest. He is married to Leah Madsen and they have two children. Mark received his BS degree from BYU in 1996 and an MS degree from the same university in 2000. He identified and described the plants existing on the Clarion formation of the Dixie National Forest as his Masters project. He worked at the herbarium with Dr. Stan Welsh for four years while attending school, and has been instrumental in collecting and contributing numerous plants to various herbariums. He has collected two new species and has had two plants named after him. He has assisted in the development of the Red Canyon Botanical Area.



He worked at the herbarium with Dr. Stan Welsh for four years while attending school, and has been instrumental in collecting and contributing numerous plants to various herbariums. He has collected two new species and has had two plants named after him. He has assisted in the development of the Red Canyon Botanical Area.

Mark has developed a Forest-wide range trend monitoring program on the Dixie National Forest and conducted annual training of district range conservationists to enhance their current monitoring understanding as well as plant identification skills. He also speaks on monitoring techniques to individuals outside agency personnel. Mark has been a member of the society for seven years, as well as a member of the Wildlife Society for three years, and Nature Conservancy for seven years. Mark has made a significant contribution in the development of important ecological information to manage areas in southern Utah.



Range Manager of the Year



Bruce Roundy has conducted rangeland research since the mid 1970s and has taught courses in rangeland vegetation improvements, watershed management, principles of range management, and restoration ecology since the mid 1980. He started his rangeland career with the ARS in Reno and later gained full professor at the University of Arizona, where he served between 1984 and 1994. In 1994, he began as professor at BYU, where he was department chair of the Botany and Range Science Department from 1996-2001, and is currently in the Department of Plant and Wildlife Science, Dept. Over this span of 30 years, he has mentored 23 graduate students (he currently has 5).

In addition, he has received outstanding awards for mentoring, advisement, and teaching. Bruce has been a central figure in rangeland management by conducting critical research to solve problems and outreach to the management agencies. Evidence of his impact comes from authoring 59 total refereed publications, 34 with undergraduate or graduate students. Bruce has also received funds for revegetation research from numerous sources. It would be challenging to suggest that Bruce is known for excellence in merely one aspect of rangeland research because he has excelled in many ranging from seed biology, hydro-thermal models of seed germination, all the way up to operational-scale rangeland revegetation.



2009
2008
2007
2006
2005
2004
2003
2002
2001
2000
1999
1998
1997
1996
1995
1994
1993
1992
1991
1990
1989
1988
1987
1986
1985
1984
1983
1982
1981
1980
1979
1978
1977
1976
1975
1974
1973
1972
1971
1970
1969
1968
1967
1966
1965
1964
1963
1962
1961
1960
1959
1958
1957
1956
1955
1954
1953
1952
1951
1950
1949
1948
1947
1946
1945
1944
1943
1942
1941
1940
1939
1938
1937
1936
1935
1934
1933
1932
1931
1930
1929
1928
1927
1926
1925
1924
1923
1922
1921
1920
1919
1918
1917
1916
1915
1914
1913
1912
1911
1910
1909
1908
1907
1906
1905
1904
1903
1902
1901
1900
1899
1898
1897
1896
1895
1894
1893
1892
1891
1890
1889
1888
1887
1886
1885
1884
1883
1882
1881
1880
1879
1878
1877
1876
1875
1874
1873
1872
1871
1870
1869
1868
1867
1866
1865
1864
1863
1862
1861
1860
1859
1858
1857
1856
1855
1854
1853
1852
1851
1850
1849
1848
1847
1846
1845
1844
1843
1842
1841
1840
1839
1838
1837
1836
1835
1834
1833
1832
1831
1830
1829
1828
1827
1826
1825
1824
1823
1822
1821
1820
1819
1818
1817
1816
1815
1814
1813
1812
1811
1810
1809
1808
1807
1806
1805
1804
1803
1802
1801
1800



Tom Monaco (right) passes the reins and the leadership of the Utah Section to Randy Russell (left)



RANCHER OF THE YEAR

Mr. Ray Terry Larson of Ephraim, Utah received the rancher of the Year award for his contribution to the sheep industry. Mr. Larsen and his son, Randy, manage the R Larson Sheep Company. Mr. Larsen acquired the initial base property in 1961 and has continued to increase his holdings. He has built a modern facility including enclosed lambing pens, intermediate holding areas, and small grazing pastures, and rangeland properties.

He has acquired additional permits on both BLM and Forest properties, and has increased sheep numbers from approximately 1,000 head of breeding ewes to over 4,000 animals. He has obtained, rented, and improved properties to maintain a pure bred herd of Rambouillet ewes near St. George, Utah. He has also arranged winter grazing areas on cultivated alfalfa fields near St. George and Arizona to winter his lambs and increase their size and maturation. He has acquired long-term leases on alfalfa fields near Milford, Utah and Arizona to maintain his sheep during breeding and spring grazing seasons to enhance multiple births, and the health of his ewes and lambs. He has invested in the use of electric fences on rental properties and cultivated fields to limit the number of animals within individual pastures and protect the soil and perennials crops.



Mr. Larsen has invested and constructed water developments on BLM properties. The water developments have significantly improved the distribution and management of grazing animals and improved habitat for wildlife. Mr. Larsen has purchased 1,600 acres of depleted big sagebrush and pinyon/juniper woodlands near his ranch headquarters in Sanpete County, and is currently working with Utah DWR to reseed the site to benefit wildlife and his grazing animals.

Mr. Larson has developed an integrated sheep operation that includes four bands of range ewes and a pure bred herd of Rambouillet ewes. He has developed the pure bred herd to produce the replacement ewes needed to sustain his animals and to improve the quality of his stock. He has consistently purchased top quality rams from the National Ram sale to selectively improve the quality of his own stock. He has emphasized the development of animals with much deeper bodies, larger frames, finer wool texture, and open face features. He has been able to sustain this breeding program by selling excess stock to other growers. His wool has consistently been graded as extremely high quality and sells for a premium for use in fine wool fabrics.

Mr. Larson has instigated breeding and lambing practices to significantly enhance multiple births, survival of lambs, rapid and continued growth of the lambs, and health of the ewes. He divides his herds into sub units for breeding and supplements the ewes prior to breeding to improve fertility and assure conception. Ewes are bred at two week intervals to concentrate lambing at concentrated periods to maximize the use of sheds, lambing pens, and early grazing pastures. Ewes are confined into enclosed sheds for lambing and new born lambs and mothers are maintained in small pens to ensure survival of the new born. The animals are then moved into small bands of increased size over a month period, which improves survival and growth of the lambs. Herds are reestablish as animals are again moved to spring ranges in western Utah. Animals are then moved to summer ranges on the Manti La Sal National Forest. This management program has resulted in the annual rearing of over 180 percent lamb crops.

Lambs are separated from the range bands in the fall and moved to alfalfa fields in Arizona and ultimately to feedlot conditions in Colorado for final sales. Lambs consistently reach 150 to 160 pounds at the time of sale. Mr. Larson has developed cooperative contacts with farmers in Arizona and feedlot growers in Colorado to maintain stability in his operations. All yearlings are separated from the breeding ewes and moved to graze alfalfa fields near St George, Utah. This allows the animals to attain maximum size and maturity before breeding. This also provides sale of excess replacement animals at premium prices.

Areas grazed by Mr. Larson on federal properties including both BLM and Forest Service, are considered in satisfactory condition and all agency personnel regard Mr. Larson as an excellent manager who cooperates fully to maintain all resources.

Mr. Larsen remains active in youth organizations and participates with the NRCS in numerous advisory positions.

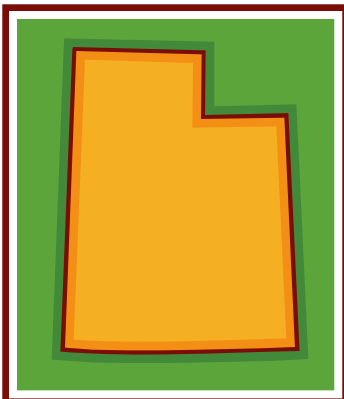
Special Presidential Award



Dr. Stewart Sanderson received a special President award for his long-term contribution to range related research. Stewart recently retired from the USDA Forest Service, Rocky Mountain Research Station, located at the Shrub Sciences Lab, Provo, Utah. Stewart received his B.S. and M.S. degrees in Botany from BYU in 1965 and 1968. He obtained his Ph. D. in Plant Genetics, University of Texas, Austin, in 1972. He completed 2 years of Postdoctoral Research in Plant Genetics at the University of Durham, U.K. He worked for Brigham Young University, Botany and Range Science Department as a Research Associate for five years, and a Research Geneticist at the Shrub Sciences Laboratory for 25 years. Stewart

has authored and co-authored nearly 100 publications on the systematics, genetics, ecology, and physiology of shrubs and shrubland ecosystem species. His work on the chromosome races of *Atriplex* (saltbush), *Sarcobatus* (greasewood), *Grayia* (hopsage), *Artemisia* (sagebrush), and other species has been particularly impressive and insightful. In addition, he has participated in the ecological classification of plant communities in many sites including, Zion National Park, the Great Sand Dunes National Park, Grand Teton National Park, and the Beaver Dam Slope. His work has been published in international, national, and regional peer reviewed journals as well as in symposia and government serials. Stewart has been a member of the Society for Range Management, The Botanical Society of America, the American Society of Plant Taxonomists, and other professional societies. He has been supportive of other organizations as well such as the Shrub Research Consortium, and the Utah Shrub Ecology Workshop.

Dr. Sanderson is an unassuming, consummate professional who has made many substantive contributions to research teams. In particular he has collaborated in many productive studies that elucidated genetics, ecology, and rangeland resource values of shrubland species. Dr. Sanderson is a tireless worker. He has long term ongoing research collaboration with Dr. Chu Ge-lin of Lanchou, China to clarify the systematic relationships of chenopod species. He led an effort to objectively classify plant communities by using plant association (RCLUS). Dr. Sanderson leads by example. He has been a tireless mentor to students and young professionals.





The Utah Section SRM Range Excellence Award for 2008

The Utah Section's 2008 Range Excellence Award was presented to Lane and Danny Little of Little Livestock, Kanab, Utah. The recognition was for improving and sustaining native plant communities on desert rangelands, and promoting healthy wildlife habitat through excellent management and a major cooperative water project.



Little Livestock utilizes BLM (approx. 18,000 acres), State Trust Lands (36,614 acres), and private grazing allotments and pastures for its cattle grazing operation. Their rangelands consist of the Bunting Well BLM/State Trust Land

Allotment near Big Water, Utah which extends into northern Arizona and private lands east of Kanab. The Bunting Well Allotment is a year-round allotment permitted for approximately 200 head of livestock. Because of Lane and Danny Little's attention to range conditions, the allotment is progressing towards management goals and remains in satisfactory condition.

In 2005, the Bunting Well went dry. This well is 1,320 feet deep and has been in operation for over 50 years. The Little's hauled water until 2006 when they completed a large range improvement project to bring water from the Church Wells Special Conservancy District to the allotment. They were able to leverage State Trust Lands, the state's Grazing Improvement Program (GIP), and federal Environmental Quality Improvement Project (EQIP) monies with this project. This large project was critical to improve rangeland conditions by keeping livestock distributed.

The main uses on the allotment are cattle grazing, wildlife (pronghorn and desert big horn) use, and recreational driving and viewing. In 2001, the Little's were conciliatory to the Utah Division of Wildlife Resources to re-introduce pronghorn back into this rangeland. Their water projects benefit wildlife directly in these drought-parched ecosystems.

These are a few of the reasons that the Utah Section of the Society for Range Management recognized and congratulated Lane and Danny Little for excellence in range management.



First Place URME Team From BYU



**Student Team Competition
Winners**

Plant ID Team: 1 BYU, 2 USU, 3 UVU

URME Team: 1 BYU, 2 USU



From left to right: Jeffrey Walton, Cortnie Prestwich, Hyla Cline, Jessica Humes, Jordan Bybee, Laura Marszalek, Kassie Puckett

Second Place URME Team From USU



Ivy Harvey, Janessa Chew, Tamra Luke, Derek Trauntvein, Garth Nelson, Jenny Christiansen, Jamin Johanson, Cari Forsgren, Levi Bennington, Jordan Linnell



First Place Plant Team from BYU



From left to right: Cortnie Prestwich, Hyla Cline, Jessica Humes, Jordan Bybee, Laura Marszalek, Jeffrey Walton, Mellissa R., Kassie Puckett

Second Place URME - USU



L-R: Lowell Gardner, Garth Nelson, Jamin Johanson, Spencer Ellis
Missing from photo is Tren Hagman)

Top Individuals Plant and URME



Laura Marszalek and Jamin Johanson

The Society for Range Management – Utah Section

L. A. Stoddart Scholarship

The Utah section of SRM will be awarding two \$1,500 scholarships for the 2009-2010 academic years. **The scholarship competition is open to students who currently are sophomore or juniors in a range or range-related program at a Utah university.** Applicants must also be members of the Society for Range Management. Past recipients of the scholarship may also apply, however preference will be given to those who have not received the scholarship in the past.

Applications must be received on or before **March 27, 2009**. The scholarship will be awarded on the basis of GPA, Society for Range Management activities, demonstrated leadership, and potential to contribute to the range management profession.

Required application materials

- Cover letter that introduces the student and describes career goals and activities in SRM and/or other range-related organizations. Include the following information:
 - Name, birth date, address, e-mail, university, major, and expected semester of graduation.
- Transcripts for all undergraduate institutions attended which include both courses taken and GPA on a 4-point scale (unofficial transcripts are acceptable).
- Two letters of recommendation.
- An essay (2-page maximum) on "Applying Range Science Principles to the Management of the World's Rangelands".

Applications and/or questions may be sent to:

Jeff Barnes

Jeffrey.Barnes@ut.usda.gov

NRCS

1860 North 100 East

North Logan, UT 84341

Phone : 435-881-2610

Last Year's Scholarship recipients:

Janessa Chew - USU

Daniel Zvirzdin - BYU



Scholarship Recipient Janessa Chew



SRM Summer Tour

June 4-5, 2009



Thursday 12:30 PM – Registration/Meet at the Tooele County Extension Office, 151 N. Main Tooele (Across from Big 5 Sports).

Skull Valley



Ensign Ranch: - (Biosolids Land Application). Study to monitor forage production and quality, soil profile changes and benefits to ranching. Mike McFarland USU Department of Civil and Environment Engineering, Joe Thackeray Ranch Manager, Mark Schmitz Utah Department of Environmental Quality.

Rush Valley

Lookout Pass crested wheatgrass diversification site Interplanting of natives into crested wheatgrass, April Hulet, Bruce Roundy.

6:00 PM – Dinner in Vernon (location to be announced)

7:00 PM – Evening Program Elizabeth Mitchell history of Benion Area

Friday 7:30 AM - Breakfast in Vernon (location to be announced)

Rush Valley

Onaqui SageSTEP Site: (Sagebrush/ Juniper treatments)



A regional experiment to evaluate methods of sagebrush steppe restoration in the Great Basin (i.e. prescribed burn, chain saw, mowing, herbicide and bullhog). Bruce Roundy, Gene Schupp, Mark Brunson, Summer Olsen, Jeff Burnham, April Hulet and Kert Young. (www.sagestep.org)

NEON Project Mark Brunson/Bruce Roundy

12:00 PM Tour Ends



Lodging in Tooele:

Best Western Inn Tooele: 365 N. Main (435) 882-5010, 1-800-448-5010. Ten rooms reserved at government rate of \$102/night until May 31st. Mention SRM Summer Tour.

Holiday Inn Express: 1531 N. Main (435) 833-0500. Ten rooms reserved for SRM Summer Tour at government rate of 102/night until June 18.

Rooms fill up fast in Tooele due to Miller Motorsports Racetrack!



Shane Green has offered his cabin and bunkhouse for those interested in roughing it (no showers, or indoor toilet). He also says there are some good camp spots at and around Vernon reservoir. Call Shane for details. Cell (435) 901-1124.



Membership Information

Membership in the Society for Range Management is open to anyone engaged in or interested in any aspect of the study, management, or use of rangelands. Membership rights and privileges include: voting, committee service, nomination and election to offices, subscription to *Rangelands* journal and the *Rangeland News* (formerly Member Resource News), discounted prices for publications, meeting registration fees, page charges and certification fees. For more information on membership in SRM, or to request a Membership Application, please contact Lesley Radtke, Director of Membership, 303-986-3309, or email LRadtke@rangelands.org.

Membership Applications Forms:

[Online Membership Application](#)

[Printable New Member Application \(pdf\)](#)

[Printable New Member Student Application \(pdf\)](#) - The New Member Application with the Student Verification Form

[Student Verification Form \(pdf\)](#)

[Printable International Application \(pdf\)](#)

[Printable International Application Country List \(pdf\)](#)



UTAH SECTION SRM 2009 SUMMER FIELD TRIP REGISTRATION FORM

June 4th and 5th, 2009, Tooele, Utah

Name: Member Non-Member

Additional Spouse or Guest Name(s):

Address:

Street

City

Zip Code

Phone Number or Email:

Registration: *\$40 per person (**Registration fees must be received by May 29, 2009**)

 *\$30 Student Registration

 \$30 Later Registration and Day of Tour (**No Meals**)

 *Includes Dutch oven dinner on June 4th and breakfast on June 5th

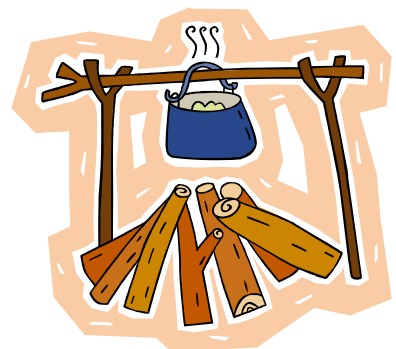
Send registration form and payment to:

Ron Torgerson

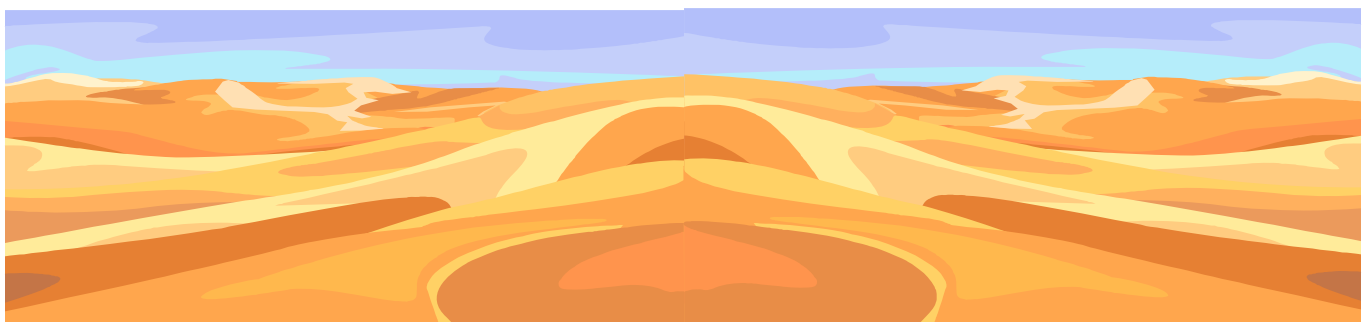
Trust Land Administration

130 N Main

Richfield, UT 84701



Make Checks payable to: Society for Range Management. Sorry no Credit Cards





Utah's Rangeland Reference Area Website

Repeat photography is a powerful tool to assess long-term vegetation change and the effect of land management practices. Repeat photography is also a valuable education tool because the general public easily interprets photos. To date, 1,571 photosets have been repeated in Southern Utah and placed on the Utah State University Extension website (<http://www.ext.usu.edu/rra>). Some of the original photos date back to 1872. Photosets are searchable by both location and vegetation type. Ecological descriptions of the changes that have occurred over time at each site are also included. In addition, to help the general public understand changes to rangelands over time this site has a photo tour that documents: Range condition, Soil erosion, Riparian conditions, Stream conditions, Oil and gas development, Mining, Pinyon-Juniper invasion, Sagebrush expansion Aspen's demise and forage production. The website has a list of the exclosures located in Utah which can be searched by county. For further information contact: Chad Reid chad.reid@usu.edu or Dr. Charles Kay charles.kay@usu.edu



**Editors Note: Take time to look at
this site - it is awesome!**



Fall 2009 Utah Section Meeting

Dates: November 5 & 6, 2009

Cedar City

Location: Crystal Inn, 1575 West 200 North Cedar City, Utah

Lodging: Crystal Inn 435-586-8888

25 Double Queen Non-smoking rooms have been reserved

Rate: Single/Double \$65.00

Triple/Quad \$75.00

All rates subject to state and local taxes.

* Includes Hot Breakfast Bar*

