

# Society for Range Management



## Utah Section Newsletter

Spring 2015

<http://www.utsrm.org>

*SRM Utah Section Newsletter*

*Maxine Deeter Editor*

Beth Burritt	President
Steve Deeter	President Elect
Shane Green	Past President
Jacob Owens	Treasurer
Maxine Deeter	Secretary
Lowell Gardner	Director
Randall Violet	Director
Eric Thacker	Director
Steve Deeter	So. Chapter President
	So. Chapter Pres-Elect
Troy Forrest	No. Chapter President
Kevin Heaton	No. Chapter Pres-Elect
	BYU Chapter President
	USU Chapter President
	UVU Chapter President
	SUU Chapter President
Mike Ralphs	Historian
Dana Truman	Information & Education
Steve Deeter	Membership
Jeff Barnes	Scholarship
Seth Ohms	Student Affairs
Bob Campbell	Range Excellence
Tom Monaco	Awards
Steve Monson	Fundraising
Brian Monroe	Ut Ntl Rcrrs Field School
Sherel Goodrich	Range Reference & Natural Areas
Chad Reid	



## Notes from the President

Beth Burritt

I hope everybody enjoyed the mild winter and the early spring. I know April awaits and spring-time in the Rockies often looks a lot like winter.

For those of you who don't know me, I am a Rangeland Area Extension Agent for the three northern counties of Utah. Before accepting my extension position, I worked for a project that studied how learning and experience affects diet selection of livestock since 1983.

The fall meeting was quite a few months ago, but I'd like to thank everyone who presented and participated in the meeting. Meeting attendance was over 90 and about 125 people attended the banquet. I'd also like to thank our sponsors USU Extension, Western SARE and the Utah GIP program.

In February, I attended the advisory council meeting during the National Society for Range Management meeting in Sacramento. SRM decided to change publishers from Allen Press to Elsevier. The change will mean more income for the National Society, such as an increase (15% to 40%) in royalties from journal revenues, a \$50,000 signing bonus spread over five years and a \$9500 increase in the editorial stipend. The publications taskforce also believes that Elsevier will increase our global reach. Furthermore, Elsevier also has a program for disseminating scientific journals in developing countries for free or at a reduced rate. An author can now add a five-minute video to their publication to talk about the main points of the article.

Other news from the Advisory Council includes a new website for SRM, which may mean that the National site will soon be hosting the websites for all the state sections. Our Rangelands magazine needs more submissions so if you've been meaning to submit an article, now would be a good time to do it. Finally, the Outreach, Communication, and Website Committee has combined with the Rangeland Partnership (RP) to focus on rangelands outreach. The RP hosts two websites, Global rangelands ([globalrangelands.org](http://globalrangelands.org)) and Rangelands West ([globalrangelands.org/rangelandswest/](http://globalrangelands.org/rangelandswest/)). The websites have a wealth of information, scientific publications, videos, and teaching materials. Check them out.

We need to set our sites on the National SRM meeting to be held in St. George at the end of January 2017. Tom Monaco and Randall Violet are our co-chairs for the 2017 meeting.

I'm certain we will be contacting you in the near future for help with the meeting. As the planning progresses, I will post our progress on the website. It will be a great opportunity to show off the beauty of Southern Utah to the Society.

It's a great honor to serve as your president. I don't think that there is anything more complex than managing arid rangelands for multiple use, and implementing management practices that improve rangeland condition.

Beth Burritt





# Youth Forum Speakers



Bryn Dayton, High School Youth Forum Speaker who placed fourth at the National Meeting, repeated her presentation to the Utah SRM group.



Sierra Curtis tied for 5th place at the Youth Forum Speaking Contest at the National Meeting. She presented her talk to the Utah SRM group.



Top Range Camp Winners: Clayton Horton, Samantha (Sam) Heelis and Georganne Cook will attend the National Meeting in Sacramento.

This was the fortieth year of range camp.



## Scholarship Winners

Amy Clark from BYU

and

Lee Simper of SUU

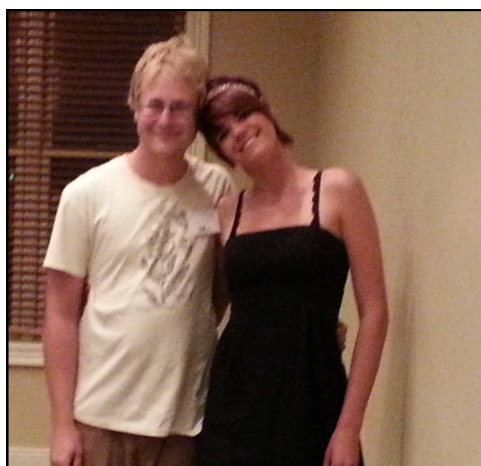
### **Amy Clark**

Amy Clark is a junior at Brigham Young University, majoring in Environmental Science. She will graduate in April 2015. Amy has done field work on Pygmy Rabbits to see the effects of mechanical removal of sagebrush on sensitive species. She also helped with a study on fire ecology in the Mojave Desert on how fire affects plant reproduction success. She has been involved with the BYU Plant ID and URME team competing in state and national SRM meetings for two years. At Orlando the BYU team won the Trail Boss award for their overall participation. Amy achieved the second highest score on her team for both plant ID and URME. She also gave an oral presentation in the undergraduate student research section and helped with the university booth. She plans to continue her education with both a Master's and PhD in range ecology in order to become a professor and teach ecology at the university level. She enjoys research and plans to continue research focused on community ecology and ecosystem functions. Amy hopes to continue to study our rangelands in an effort to preserve their health, beauty and productivity for us and future generations.

### **Lee Simper**

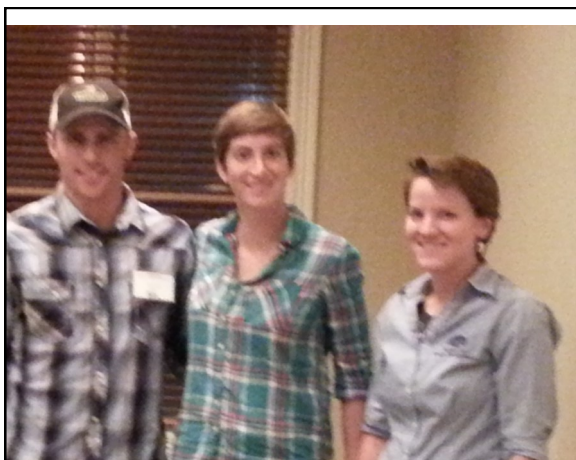
Lee is a junior attending Southern Utah University, majoring in Agriculture/Range Science. He will graduate in May 2015. He has been involved with the SUU Range Club serving as its president. Lee is interested in a career that deals with conserving the natural resources of our country. He has spent five seasons working with the US Forest Service as a wild land fire fighter and also worked as a subcontractor collecting data under the NRI (National Resource Inventory) on BLM public rangelands. At the SRM meeting in Orlando Lee was heavily involved in the student competitions, i.e. Plant ID, URME and a poster presentation. All these experiences have given him a keen awareness of the importance of conserving soil, water, air, plant, and animal resources, and have increased his desire to seek a career where he can have some role in seeing this accomplished.

# Student Judging Winners



## Individual Plant ID Winners

- 1st - Garrett Billings - USU
- 3rd - Camille Waters - USU
- 2nd - Jamie Reynolds (not shown)



## Individual URME Winners

- 1st - Cody Butler - USU
- 2nd - Morgan Hughes - USU
- 3rd - Amy Clark - BYU



## Individual Combined Winners

- 1st - Jaime Reynolds - USU (not shown)
- 2nd - Amy Clark - BYU
- 3rd - Brianne Palmer - USU

<u>Plant ID</u>	<u>URME</u>	<u>Combined</u>
1st - USU	1st - USU	1st - USU
2nd - BYU	2nd - BYU	2nd - BYU
3rd - UVU	3rd - UVU	3rd - UVU



# Student Judging Teams



Team USU

Team BYU



Team SUU

# 2014 Outstanding Young Range Professional

Jamin Johanson

Jamin Johanson holds B.S. and M.S. degrees from Utah State University; 2008 and 2011 respectively. He has five years of experience as a Range Conservationist with NRCS Utah. He has helped develop new and innovative ESD tools and ideas including (1) Parameter-elevation Regressions on Independent Slopes Model (PRISM), (2) Ecological Site Information System business requirements review team, and (3) Digital soil mapping for ESD development. Jamin is a member of the NRCS National Dynamic Soil Properties committee. He helped initiate the National Interagency Riparian ESD Leadership Team, of which he is still an active member. He has a long list of scientific publications relating to his field.

Jamin has attended all International SRM meetings since 2007 when he first competed in the Plant ID and ERME contests in Reno, Nevada. As an undergraduate student he conducted a research project that required him to do field studies of crested wheatgrass seedings and community dynamics on 38 ecological sites in Utah, Nevada, and Idaho. Jamin presented the results of this work at the SRM meeting in Louisville, Kentucky in 2008. This work began Jamin's interest in ESDs and he presented a paper in Albuquerque, New Mexico, in 2009 describing a methodology for developing ESDs. Following this presentation, Jamin was approached by Shane Green asking him if he would be interested in doing his M.S. on ESDs and then work for NRCS. What followed was Jamin doing his MS degree at USU where he worked on ESDs and State and Transition (S&T) models. He gave a presentation at the Denver SRM meeting and at an NRCS meeting in Logan relating to this work.

Jamin is working with the Utah Division of Wildlife Resources and the Agricultural Research Service (ARS) Forage and Range Laboratory to tie almost 50 years of "range trend" data (from several hundred sampling locations) to ecological sites and then use the changes measured over this time period to update ESDs and develop S&T models.

As part of his assignment with NRCS, he has been an active member of several soil survey teams, including work in Hovenweep National Monument and surrounding areas, Capital Reef National Park and McCracken Mesa soil survey in Kane County.

Prior to finishing his MS degree Jamin became involved in the YPC Advisory Council and served as co-chair. He was elected as the Vice President and Outreach Committee Chair and in 2013 served as President of the YPC.

Jamin is married and the father of four children. He resides in Monroe, Utah.



# 2014 Outstanding Young Range Professional

## Jeff Reese

Jeff holds a BS degree in Rangeland Resources from Utah State University. He is currently employed as a Rangeland Management Specialist for the Bureau of Land Management Cedar City Field Office. Jeff is responsible for the administration of 43 grazing allotments within the Cedar City Field Office area. He ensures that all grazing applications, grazing bills, annual operating instructions are completed in a timely manner while providing for proper file management. He completes compliance inspections on the majority of his allotments on an annual basis. He has an outstanding relationship with all of his permittees, which has led to good on-the-ground management of the public lands under his jurisdiction.

Jeff consistently works with his permittees to ensure that grazing management systems are adhered to while allowing for flexibility to maintain the viability of their grazing operations. Currently he is working on multiple high profile projects that include implementation of vegetation treatments within greater sage grouse habitat and Utah prairie dog habitat. This required him to work extensively with agency partners, permittees and others to ensure that projects objectives were obtained. In addition, Jeff has actively worked on a new project that involves vegetation treatments and Range Improvement Projects such as pipelines and troughs within an allotment that is occupied by Utah prairie dogs and great sage grouse. The approval process for the project is ongoing; however, Jeff has met extensively with the grazing permittee to ensure that all aspects of the project are discussed so that successful implementation of the project will occur when approved.

Jeff consistently meets his permittees on the ground to discuss range issues and solve problems before they occur. He has ensured that permittees have adequately rested numerous wildfires where Emergency Stabilization and Rehabilitation treatments have occurred. This has allowed for treatments to become established which has resulted in improved rangeland health.

Jeff has done an outstanding job with his customer service obligations by meeting and negotiating with Range Users to resolve difficult situations. The effective communications skills that Jeff possesses allow him to communicate Resource Goals and Objectives to a variety of public land users to ensure the long term sustainability of the public lands in support of the BLM mission.

Jeff's experiences include working for Pheasants Forever/NRCS as a Range and Wildlife Conservationist.

Besides his involvement in SRM, Jeff is a Scoutmaster for the Boy Scouts of America. He is married and the father of one child. He resides with his family in Enoch, Utah.



# 2014 Range Manager of the Year

## **Troy Forrest**

Troy received his education at Snow College and Utah State University where he received a degree in Range Management in 1998. He grew up working on a family ranch in San Juan County, Utah. He spent three summers as a Range Aide fighting fires for the BLM. He was also involved with the Utah Association of Conservations Districts for nine years and the UDAF Improvement Program for seven years, five as Co-ordinator and two as Program Manager. Troy was the first person hired under the GIP.

Currently Troy is the program manager for the Utah Grazing Improvement Program (UGIP) where he does double duty. He supervises five Regional Coordinators and serves as the Regional Coordinator for the NW Region of UGIP. Troy also coordinates the work of and supervises the staff biologist responsible for monitoring project success.

A member of the SRM for the years, Troy is currently serving as the Northern Chapter President. He works closely with the Utah Cattlemen's Association and the Utah Woolgrowers Association to promote and improve grazing management. He has been a member of the Farm Bureau for more than ten years and won the State Discussion Meet in 2004 as a young Farmer/Rancher and finished 16th at Nationals.

Troy has direct responsibility for the UGIP program that provides \$1.5 million annually to improve range/grazing management in Utah. His unique ability to work directly with ranchers in applying grazing management principles has benefited rangeland health across Utah. Troy is innovation in working with ranchers and permittees to resolve concerns and issues with the BLM and Forest Service.

While Troy would be the first to acknowledge the accomplishments of the UGIP is a "team effort, there is no doubt that his leadership has been key in putting over \$20 million in rangeland projects on the ground since 2007. NRCS, WRI, NGOs and ranchers and producers have provided about one half of these dollars to match the GIP funds and the acres benefited now is approaching 2.5 million acres.

The UGIP works closely with six Regional Grazing Advisory Boards and a State Grazing Advisory Board. Troy has shown creative and innovative leadership with these producers to build and multiply the benefits of the program.

Troy has also organized Range and Grazing Management presentations at Utah Industry groups annual conventions on several occasions, and been invited to do presentations at Cattlemen's and range meetings in neighboring states. Troy also participated in bring a group of Nevada Ranchers, BLM Biologists, and NGO representatives to provide a program of success in riparian management to the SRM and Utah Cattlemen's meetings in Utah.

Troy is married and the father of four sons.





## 2014 Ranchers of the Year

**Colby K. and McKenzie Pace and two sons - Half Circle Cross Ranch - Chalk Creek - Coalville, Utah**

The Half Circle Cross Ranch has been in operation for 20 years. It is a self-built operation and is part of a conservation easement. It consists of 15,000 acres of native range and 400 acres of hay meadow. The ranch carries 560 head of cows, 30 bulls, 80 ewes, 6 bucks, and 20 horses.

The Pace family is involved in many community affairs including being members of the Summit Soil Conservation Board, Farm Bureau, Utah Cattlemen's, Forest Legacy Board and Chalk Creek/Hoytsville Water Users Board. They have attended many TriState Range tours. They have also held the Utah Cattlemen's Convention Field Day Tour at the ranch in Chalk Creek. That included touring some of the country on which the ranch sits and educating other cattlemen on the ways of their operation. Paces have donated willow trees from the Riparian Pasture to many other streams and creeks and rivers across the state. They also own and operate a 4-H Club and Show Lamb business. In this they have received the Breeder of the Year Award from the Rocky Mountain Jackpot Show Series and many Grand and Reserve Grand Champion lambs at various shows around the state and in Indiana. This past year they received the Young Cattle Producer of the Year Award given by Northern Livestock Video Auction.

Paces try hard to have a great land management system and believe it is crucial to the success of their ranching operation. They run a CRMP in Chalk Creek/South Fork which includes grazing systems, rotational grazing, deferred acres for wildlife, seeding on dry lands, grazing riparian pastures at certain times, soil sampling for fertilization spring development, pressurized irrigation funded by the NRCS, juniper removal, projects for wildlife and cattle, reseeding the ground and stewardship to the land to improve the ground they graze.

The Paces take very special pride in their livestock management. They believe that a high quality animal is key to the success of their ranching operation. This includes: raising replacement cattle, purchasing high performance crossbred bulls (Sim X and Angus). They market their calves through Northern Livestock Video auction in Billings, Montana. They are highly involved in the All Natural Market, which includes IMI Global Gap Certification and Where the Food Comes From Program. Their calves are marketed through Whole Foods Grocery Stores throughout the U. S. Weaning weight is a key factor of their operation as they believe that "pounds pay". They are on a full Pfizer/Zoetis Health Program which is very important to a successful operation. They also have good working and grazing relations with the BLM and the Nature Conservancy, which is their fall and winter grazing. They are fortunate to run their cattle on all private lands in the spring and summer months.



## 2014 Ranchers of the Year

### **B. Reed Groll - Groll Land and Livestock - Randolph, Utah**

Groll Land and Livestock has lived and worked on this family operation his whole life. He bought it from his father and grandfather. The ranch of 150 acres of cropland, 1,000 acres of hay meadow and 150 acres of seeded pasture. They run livestock on the 25,000 Duck Creek BLM allotment. Groll runs 300 head of mother cows and 300 ewes.

Reed's family has been involved in 4-H. He has helped his children and grandchildren over the last 39 years in many different programs. Reed has helped with both supplying and helping to raise both sheep and cattle in the program. He also attends activities and goes to their livestock shows.

Reed has been a member of the Soil Conservation Service Grazing Board. He has also worked as a member of the NRCs grazing board with the local commissioners in Rich County. He has been the president of Rich Land and Grazing for many years. He works for the best interest of the land owners in grazing, oil and gas, and wildlife hunting access issues. Reed is currently a member of the community council board at Rich High School in Randolph.

In 2009, the BLM started a new grazing rotation system on the Duck Creek Allotment that had several years of planning behind it. This plan started with the permittees on the allotment and their goal to better manage the grazing on their allotment. Historically they grazed their entire 25,000 acre allotment season long resulting in negative impacts on riparian areas. They worked with a variety of partners including the BLM and developed a six pasture deferred rest rotation grazing system and proposed it to the BLM. The BLM's final decision was to implement a four pasture deferred rotation grazing system including a new upland water development on BLM land. At the same time the private land owners conducted vegetative treatments on private lands within the allotment for improved forage and habitat conditions. Although changed from a four pasture to six pasture system, Reed continued to work with the BLM realizing the benefits of the deferred rotation system and took the lead in many ways with regards to implementation of this plan including the water developments and the vegetative treatment that have benefitted all of the resources on the allotment. BLM's decision was appealed and taken to court by two groups from the environmental community, requiring both BLM and support from the permittees to defend the decision. Once again Reed took the lead for permittees to support BLM's efforts to assure that the improved grazing practices could be implemented on their allotment. This includes coordinating people to attend the hearing as representatives for the permittees and often driving two and a half hours to Salt Lake to attend many days of the hearing himself.

This rotation system has now been run for a entire cycle (four years) and it has improved the conditions on the allotment. Utilization in riparian areas has decreased and the allotment is receiving growing rest more frequently than it ever has before. As president of the permittee association of the allotment, Reed keeps careful notes and helps facilitate livestock moves. He has helped the BLM on numerous occasions to coordinate with the permittees on the allotment and even to conduct livestock counts for improved monitoring efforts on the allotments and adherence to pasture movers. After the vegetation treatments on the Duck Creek allotment, Reed lead the permittees to voluntarily rest the affected pastures for two years to ensure seeding establishment.





## **The Society for Range Management – Utah Section**

### **L. A. Stoddart Scholarship**

The Utah section of SRM will be awarding two \$1,500 scholarships for the 2015-2016 academic years. **The scholarship competition is open to students who currently are sophomore or juniors in a range or range-related program at a Utah University.** Applicants must also be members of the Society for Range Management. Past recipients of the scholarship may also apply, however preference will be given to those who have not received the scholarship in the past.

Applications must be received on or before **April 17, 2015**. The scholarship will be awarded on the basis of GPA, activity level with the Society for Range Management which includes involvement with a university range club, demonstrated leadership, letters of recommendation, essay and potential to contribute to the range management profession.

#### **Required application materials**

Cover page that introduces the student and describes career goals and activities in SRM and/or other range-related organizations. Include the following information:

Name, birth date, address, e-mail, university, major, and expected semester of graduation. Here students may include anything they wish the committee to know about themselves.

Transcripts for all undergraduate institutions attended which include both courses taken and GPA on a 4-point scale (unofficial transcripts are acceptable).

Two letters of recommendation. May be included with application or sent directly to Jeff Barnes by email from the person writing the recommendation.

- An essay (2-page maximum) on “Strategies and Techniques that can be used to Reduce the Frequency of Large Scale Wildfires”.

Applications should be sent or delivered to:

Jeff Barnes

[Jeffrey.Barnes@ut.usda.gov](mailto:Jeffrey.Barnes@ut.usda.gov)

NRCS

1860 North 100 East

North Logan, UT 84341

Phone : (435) 881-2610

Fax: (435) 755-2117



# Students at National Meeting

## 2015 SRM Honor and Student Awards

### Utah Section SRM

**Rangeland Cup Team Award**      First Place      BYU

**Range Plant ID Team**      Fourth Place      USU

**URME Team Award**      Fifth Place      USU

#### **URME Individual Award**

First Place-Morgan Hughes-USU

Fifth Place-Amy Clark-BYU

#### **Combined URME and Plant ID Individual Award**

Fifth Place-Jamie Reynolds-USU

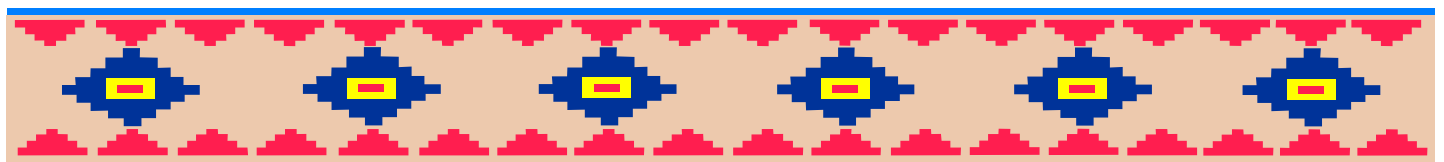
#### **Young Professional Conclave Outstanding Apprentice**

Jamin Johanson

#### **High School Youth Forum Presentations**

7<sup>th</sup> Place –Clayton Horton

8<sup>th</sup> Place –Samantha Heelis

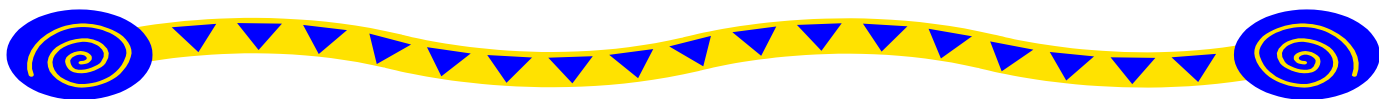




# 2017 International Meeting

We are pleased to announce that Utah's bid for hosting the SRM National Meetings in 2017 was accepted. This will be the fifth time that Utah has hosted the meeting. The first SRM meeting was held in Salt Lake City in 1948, returning in 1961, 1985, 2004. In 2017 the Utah Section will host the meetings in St. George. This change of venue should result in some fair weather and unique prospects for tours. The Co-chairs for this meeting are Tom Monaco with ARS in Logan and Randall Violett with SUU in Cedar City. Many committees and responsibilities will need to be filled, so all members should be prepared to pitch in with their ideas and support. It is an opportunity for us to show off our state and our good works to our associates from other parts of the country.

As rangeland professionals, our daily struggle for sound management of rangelands is enclosed in the constraints of the physical surroundings, biological settings, and historical legacy of our predecessors. In Utah our history is rich with the story of the land. The historical legacy aspect must not be downplayed or ignored. Keeping this perspective at the forefront can be limiting or liberating depending on the situation. That is an introduction to a much longer piece of text than I have room for here, so suffice it to say that the unique facets of range management in Utah should make for an engaging and enlightening meeting in 2017.



## Mark Your Calendars

### Summer Tour

The Summer Tour is scheduled for June 25th and 26th. We will visit the Monty Weston and Reed Groll outfits. They were the winners of the Rancher of the Year Awards at the Fall meeting.

More information on the Summer Tour will be sent as it becomes available.

### Fall Meeting

The fall meeting will be held the 5th and 6th of November in Moab.

Moab is a great family place, so this might be a good time to bring the family along. There will be lots of things for them to do while you attend the meeting. Our conference will be held downtown and in close walking distance to shops, eating places and other attractions.



## Membership Information

### Memberships

**New members:** To pay online, please review the membership options below. When you have decided on a selection, you can then click "Add to Cart" to add the membership to your shopping cart. Once the membership appears in your shopping cart, you can then add a subscription to *Rangelands* and *REM* before checking out.

**New Members:** [click here](#) and let us know how you heard about us!

**Renewing members:** Please [login](#) to renew your membership online. Once you are logged in, you may add the available membership to your shopping cart. Once the membership appears in your shopping cart, you can then add a subscription to *Rangelands* and *REM*. Contact information and demographics can be updated under "Member Profile."

All members, new and renewing, also have the option to pay by post; to do so, then please complete the [Membership Form](#) and send it with payment to the below address.

Society for Range Management  
Business Office  
P.O. Box 1897  
Lawrence, Kansas 66044

\*\*Please contact us directly ([membership@rangelands.org](mailto:membership@rangelands.org) or 785-865-9456) if you qualify for the following SRM [membership rates](#)\*\*  
Emeritus, Un-Sectioned, Commercial, Institutional

### Membership Applications Forms:

[Online Membership Application](#)

[Printable New Member Application \(pdf\)](#)

[Printable New Member Student Application \(pdf\)](#) [Student Verification Form \(pdf\)](#)

[Printable International Application \(pdf\)](#)

[Printable International Application Country List \(pdf\)](#)

